



## PRODUCT CODE:

GH1196.AHAT400EN

## CONSTRUCTIVE & DIMENSIONAL:

Application field:	Walkways and driveways, Passageways, Cycle paths, Gardens
Construction material:	Die-cast aluminum EN AB 44100 highly resistant to oxidation
External screws:	Stainless steel A4-70 treated with highly antioxidant water-repellent lubricating solution
Length:	92mm(3,62")
Width:	92mm(3,62")
Height :	90mm(3,54")

## ELECTRICAL:

Description:	1 x 7 W LED 4000 K CRI>90 885 lm
Operating Power:	110-277 V / 50-60 Hz
Number of heads:	1
Number of Circuits:	1
Driver positioning:	Integral
Control gear type:	Electronic
Cable entry:	Fixture supplied with pre-wired cable H07RN8-F with plastic cable gland M20 Ø 7/13 mm
Second cable entry:	Available

## OPTICAL:

Beam type:	Bollard 1 light
Beam angle:	76° x 60°
Light distribution:	Asymmetric
Beam directionability:	Fixed
Diffuser material:	Sodium calcium tempered glass 3mm
Diffuser finish:	Clear




## LIGHTING SOURCE:

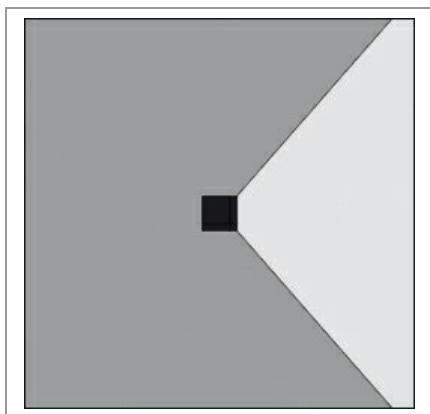
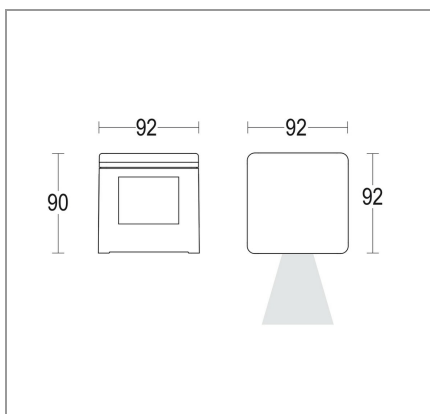
Light source:	LED
Power:	7 W
LED voltage range:	31.2-36.8V
Current:	200 mA
ZVEI - Led Type:	LED
Color temperature:	4000 K
Color rendering index:	CRI>90
Nominal LED emission:	885 lm
Light source:	Included
Ambient temperature operating range:	-20 °C ÷ +35 °C
Binning:	Step MacAdam 3

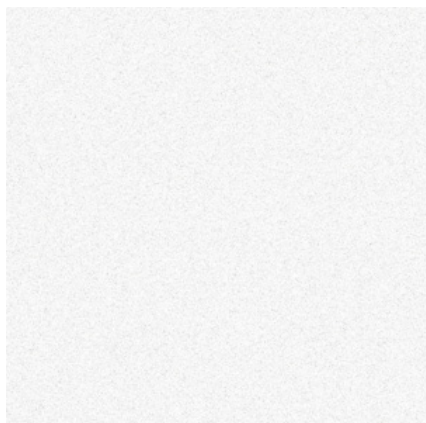
## FINISH CODE:

 .05 Dark grey (matt)	 .19 Light Grey
--	---

## ACCESSORIES:

 IP 68 connector for through wiring AC279	 IP 68 fast connector Small AC204	 Stake Microbivio AC640
---	---	--





**.01 WHITE**



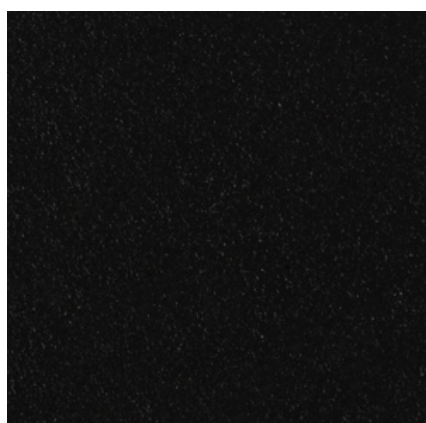
**.05 ANTHRACITE GREY**



**.19 LIGHT GREY**



**.15 STAINLESS STEEL**



**.02 BLACK**



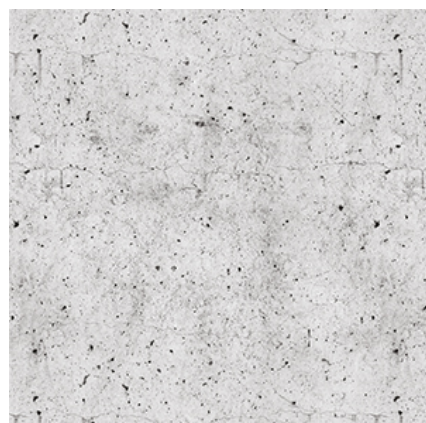
**.32 OAK EFFECT**



**.45 RUST**



**.34 GLASS**



**.43 CONCRETE EFFECT**