



MICROBIVIO FLOOR

PRODUCT CODE:

GH1196.BGAT400EN

CONSTRUCTIVE & DIMENSIONAL:

Application field:	Walkways and driveways, Passageways, Cycle paths, Gardens
Construction material:	Die-cast aluminum EN AB 44100 highly resistant to oxidation
External screws:	Stainless steel A4-70 treated with highly antioxidant water-repellent lubricating solution
Length:	92mm(3,62")
Width:	92mm(3,62")
Height :	90mm(3,54")

ELECTRICAL:

Description:	1 x 3.5 W LED 4000 K CRI>90
Operating Power:	110-277 V / 50-60 Hz
Number of heads:	1
Number of Circuits:	1
Driver positioning:	Integral
Control gear type:	Electronic
Cable entry:	Fixture supplied with pre-wired cable H07RN8-F with plastic cable gland M20 Ø 7/13 mm
Second cable entry:	Available

OPTICAL:

Beam type:	Bollard 1 light
Beam angle:	76° x 60°
Light distribution:	Asymmetric
Beam directionability:	Fixed
Diffuser material:	Sodium calcium tempered glass 3mm
Diffuser finish:	Clear




LIGHTING SOURCE:

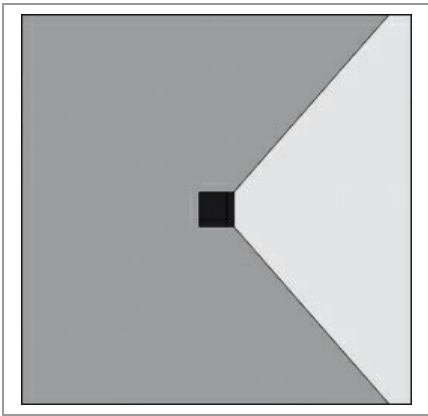
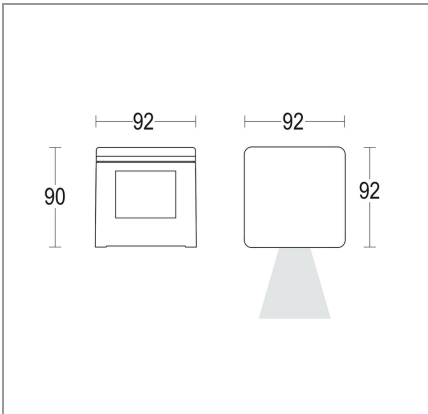
Light source:	LED
Power:	3.5 W
Courrent:	200 mA
ZVEI - Led Type:	LED
Color temperature:	4000 K
Color rendering index:	CRI>90
Light source:	Included
Ambient temperature operating range:	-20 °C ÷ +35 °C

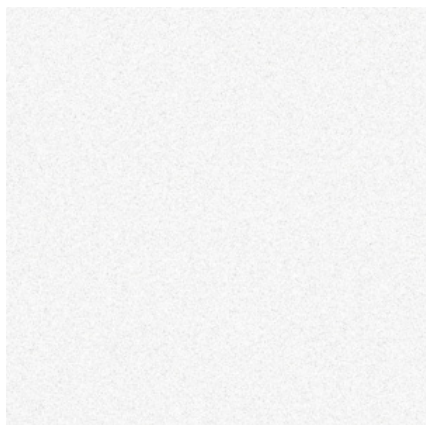
FINISH CODE:

 .05 Dark grey (matt)	 .19 Light Grey
--	---

ACCESSORIES:

		
IP 68 connector for through wiring AC279	IP 68 fast connector Small AC204	Stake Microbivio AC640





.01 WHITE



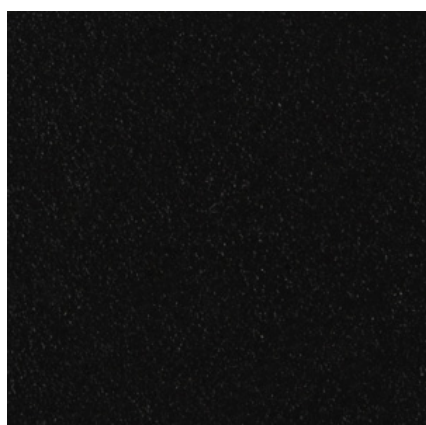
.05 ANTHRACITE GREY



.19 LIGHT GREY



.15 STAINLESS STEEL



.02 BLACK



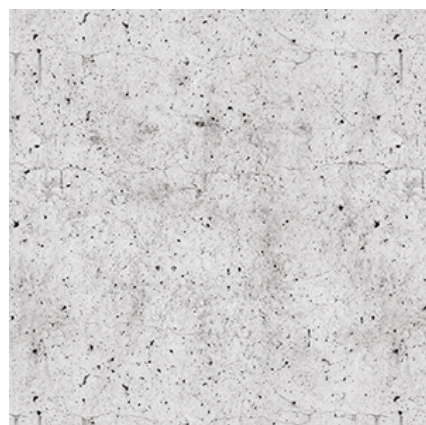
.32 OAK EFFECT



.45 RUST



.34 GLASS



.43 CONCRETE EFFECT