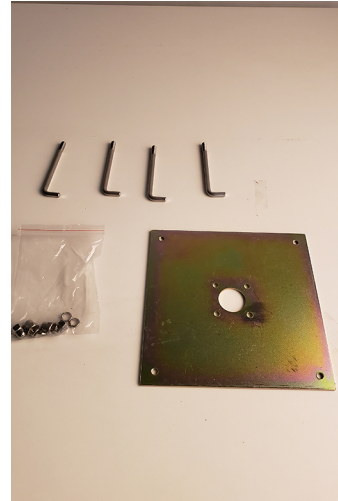




**BULLARD**  
BOLLARDS

## CEMENT INSTALL KIT



1. Place Lag bolts onto plate and place in curing cement pad. Make sure to have "Metal Plate" attached to bolts so there is no movement as the cement cures.
2. Allow cement to cure properly
3. Attached Bollard to plate using bolts and nuts supplied.

[g@gordonbullard.com](mailto:g@gordonbullard.com)  
[www.bullardbollards.com](http://www.bullardbollards.com)  
269-569-6700



991 South Gull Lake Dr  
Richland, MI 49083, USA  
1 877-964-464