



PRODUCT CODE:

GH1122.LVMT300EN

CONSTRUCTIVE & DIMENSIONAL:

Application field: Shrubs and hedges, Columns, Facade, Monuments & Statues, Little walls, Walls, Trees
 External screws: Stainless steel A4-70 treated with highly antioxidant water-repellent lubricating solution
 Diameter: 70mm(2,75")
 Length: 70mm(2,75")

ELECTRICAL:

Description: 1 x 8 W LED 3000 K CRI>85 650 lm
 Operating Power: 110-277 V / 50-60 Hz
 Number of heads: 1
 Number of Circuits: 1
 Driver positioning: Integral
 Control gear type: Electronic
 Cable entry: Fixture supplied with cable 0,5m with IP68 connector
 Cord length: 0.5 m
 Emergency kit: Not available

OPTICAL:

Beam type: Bollard 1 light
 Beam angle: 36°
 Light distribution: Symmetric
 Beam directionability: Fixed
 Diffuser material: Soda-lime tempered glass 4mm
 Diffuser finish: Clear

LIGHTING SOURCE:

Light source: LED
 Power: 8 W
 ZVEI - Led Type: DOB
 Color temperature: 3000 K
 Color rendering index: CRI>90
 Nominal LED emission: 650lm
 Light source: Included
 Ambient temperature operating range: -20 °C ÷ +35 °C

FINISH CODE:

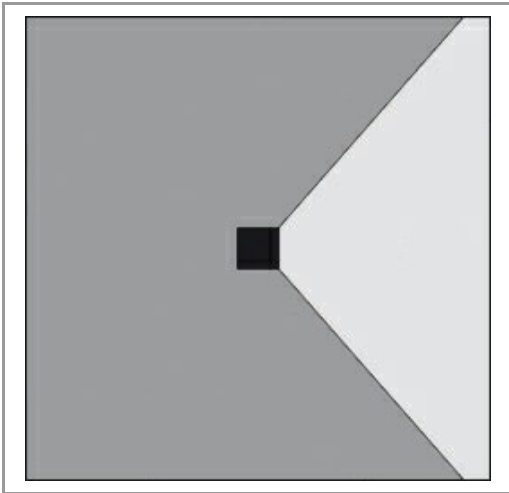
.05 Dark grey (matt)

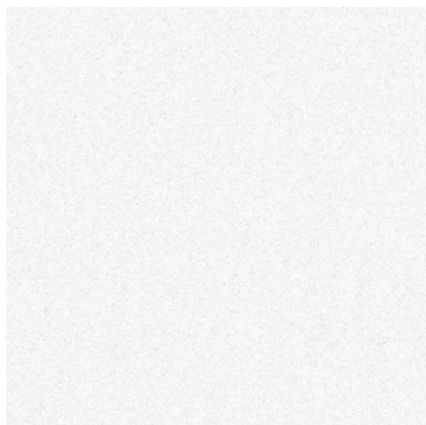
.19 Light Grey

ACCESSORIES:



Post Ø20mm - H 250mm AC453 Post Ø20mm - H 500mm AC454 Post Ø20mm - H 1000mm AC455 Post Ø20mm - H 1500mm AC456





.01 WHITE



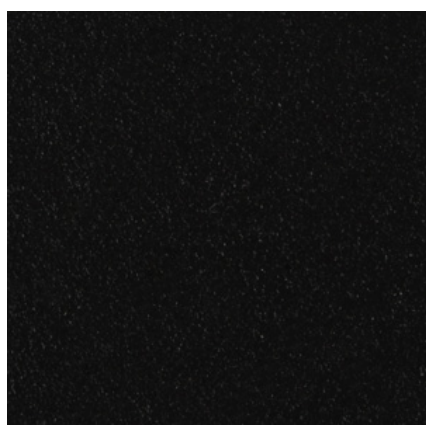
.05 ANTHRACITE GREY



.19 LIGHT GREY



.15 STAINLESS STEEL



.02 BLACK



.32 OAK EFFECT



.45 RUST



.34 GLASS



.43 CONCRETE EFFECT